



Kelderman Manufacturing
2686 Highway 92 • Oskaloosa, IA 52577
phone:641.673.0468 • fax:641.673.4168
www.kelderman.com

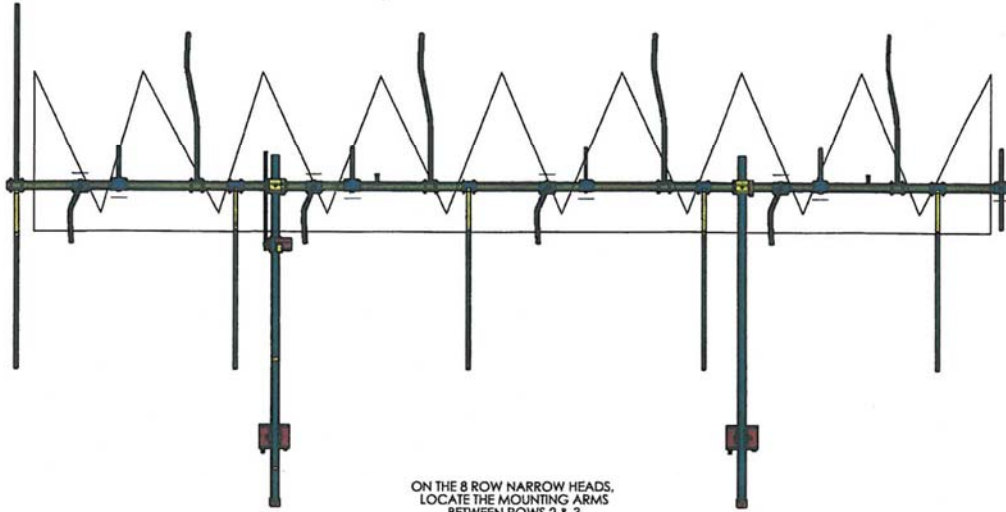


CORN REEL OWNERS MANUAL & INSTALLATION INSTRUCTIONS



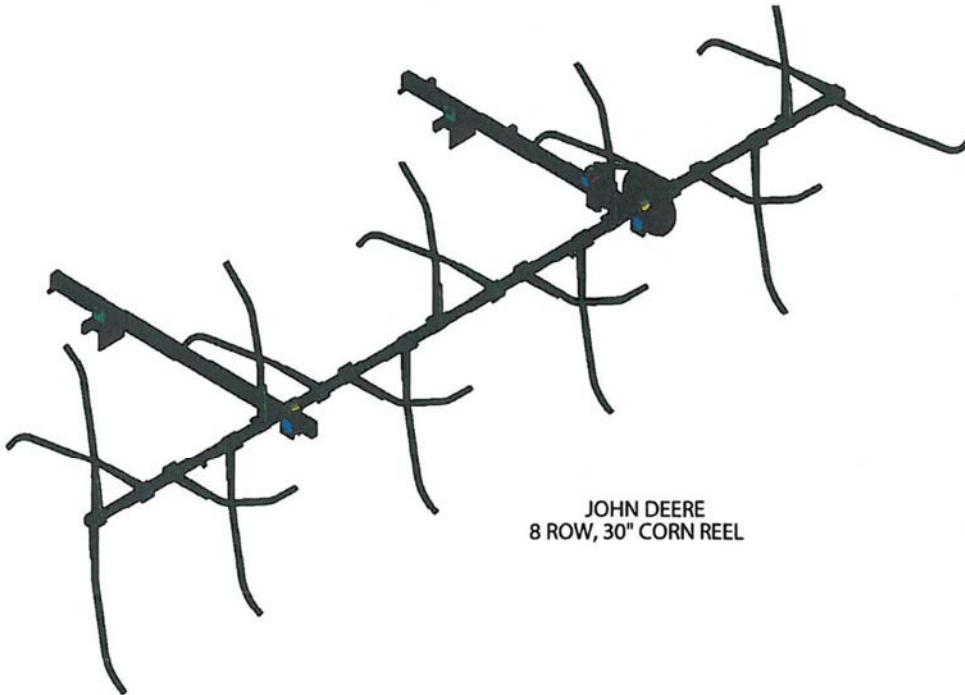
Please visit You Tube for Installation Videos

OVERHEAD VIEW OF CORN REEL

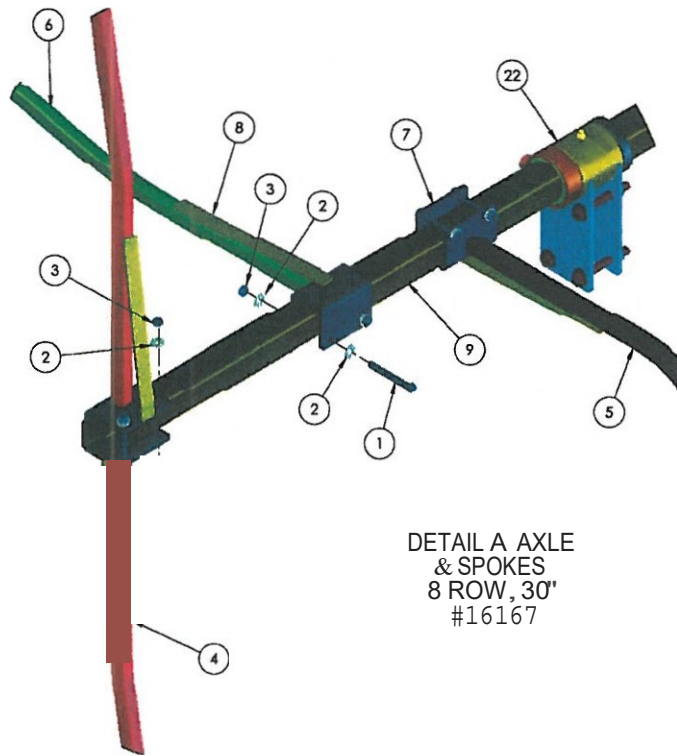


ON THE 8 ROW NARROW HEADS,
LOCATE THE MOUNTING ARMS
BETWEEN ROWS 2 & 3.

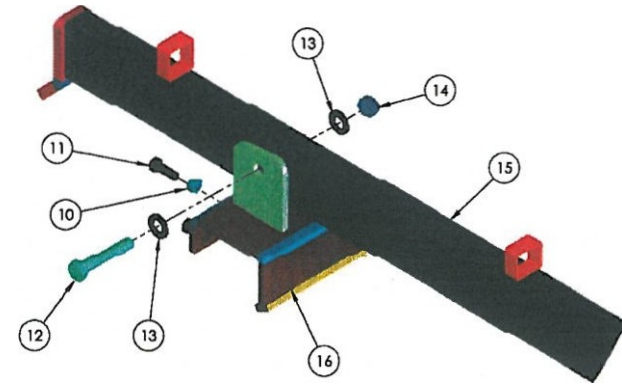
ON ALL 4 & 6 ROW HEADS, LOCATE
THE MOUNTING ARMS OVER THE
FIRST FULL SNOUT BETWEEN ROWS 1 & 2.



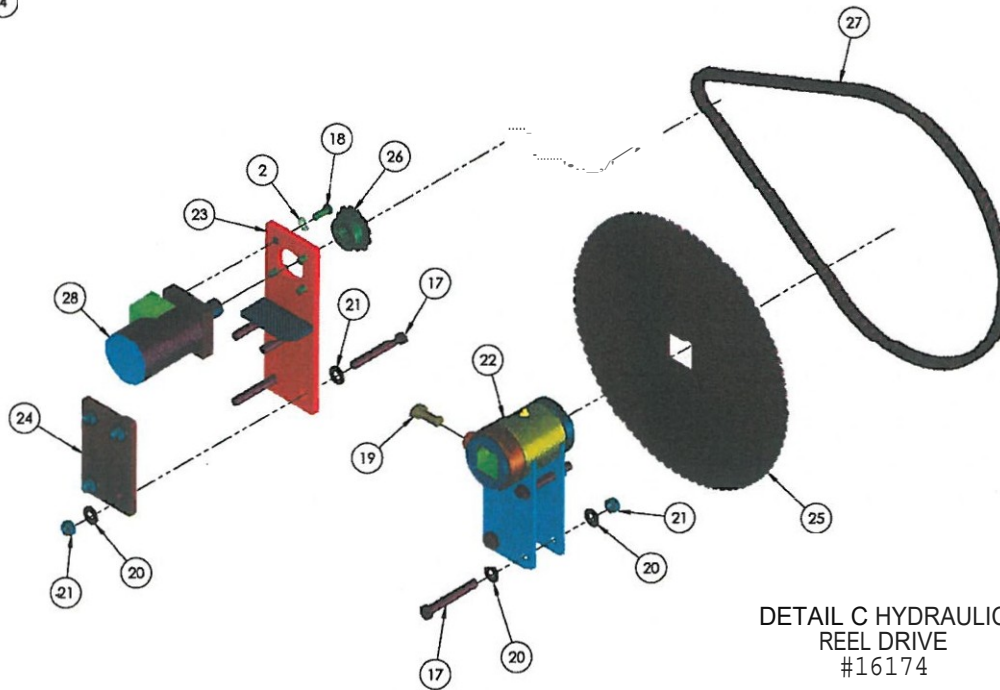
JOHN DEERE
8 ROW, 30" CORN REEL



DETAIL A AXLE
& SPOKES
8 ROW, 30"
#16167



DETAIL B
MOUNTING ARMS
8ROW, 30"
#16150



DETAIL C HYDRAULIC
REEL DRIVE
#16174

PARTS LIST FOR 8 ROW 30" CORN REEL ONLY.
PARTS LIST WILL VARY BASED ON MAKE AND MODEL.

ITEM NO.	PART NUMBER	DESCRIPTION	QTY.
1	12232	HEX BOLT - 3/8-16 X 3 1/4" GR.8	36
2	13002	3/8" FLAT WASHER	76
3	13102	HEX NUT - 3/8"-16	36
4	16010	END SPOKE	2
5	16011	RIGHT SPOKE	8
6	16012	LEFT SPOKE	8
7	16013	HUB PLATE	18
8	16017	SUPPORT BAR	20
9	16052	AXLETUBE - 216"	1
10	10008	WELD NUT - 1/2"-13	6
11	12006	HEX BOLT - 1/2"-13X 1 1/2" GR.8	6
12	12528	HEX BOLT - 3/4"-10 X 4" GR8	2
13	13008	3/4" FLAT WASHER	4
14	13108	HEX NUT - 3/4"-10	2
15	16018	FRAME - W/ HOSEGUIDES (ARM)	1
16	16114	ARM MOUNT (Mounting Bracket)	2
17	12026	HEX BOLT - 1/2"-13 X 3 3/4" GR.8	5
18	12210	HEX BOLT - 3/8"-16 X 1" GR.8	4
19	12404	HEX BOLT - 5/8"-11 X 1 1/2" GR.8	2
20	13004	1/2" FLAT WASHER	10
21	13104	HEX NUT - 1/2"-13	5
22	16031	NEUTRAL AXLE BEARING	2
23	16041	REEL MOTOR MOUNT	1
24	16043	MOUNTING PLATE	1
25	16107	96 TOOTH DRIVEN SPROCKET	1
26	16112	12 TOOTH DRIVEN SPROCKET	1
27	16115	REEL DRIVE CHAIN	1
28	16134	HYDRAULIC DRIVE MOTOR	1

Table of Contents

Step 1: Mounting Bracket Installation	4
Step 2: Side Arm Installation.....	5
Step 3: Drive Sprocket & Idler Bearing Installation.....	6
Step 4: Drive Axle Installation.....	6
Step 5: Spoke Installation.....	7-8
Step 6: End Spoke Installation.....	9
Step 7: Hydraulic Motor Installation.....	10
Step 8: Final Adjustment & Operation.....	11
Corn Reel Top View & Spoke Diagram.....	1
Mounting Brackets.....	13-15

IMPORTANT! PLEASE READ!

It is important that the entire installation instructions be read thoroughly before proceeding with corn reel installation.

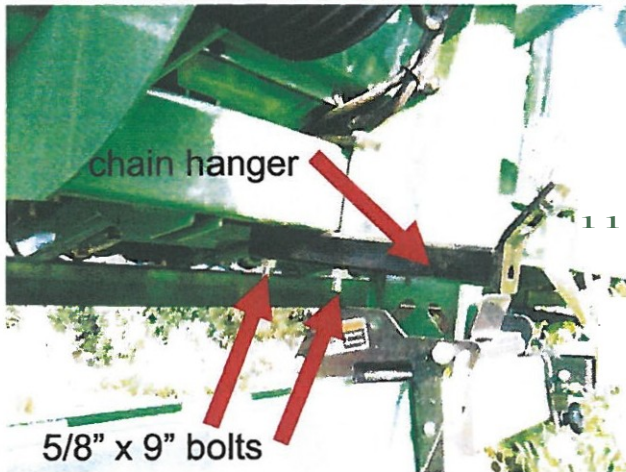
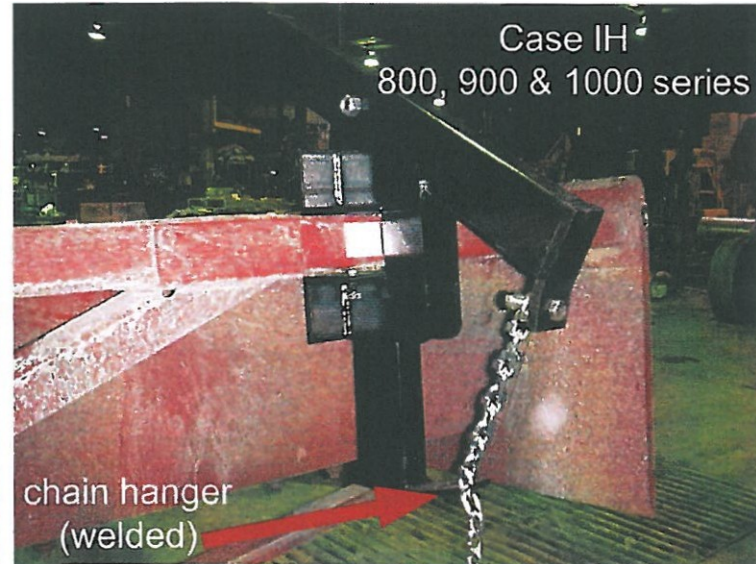
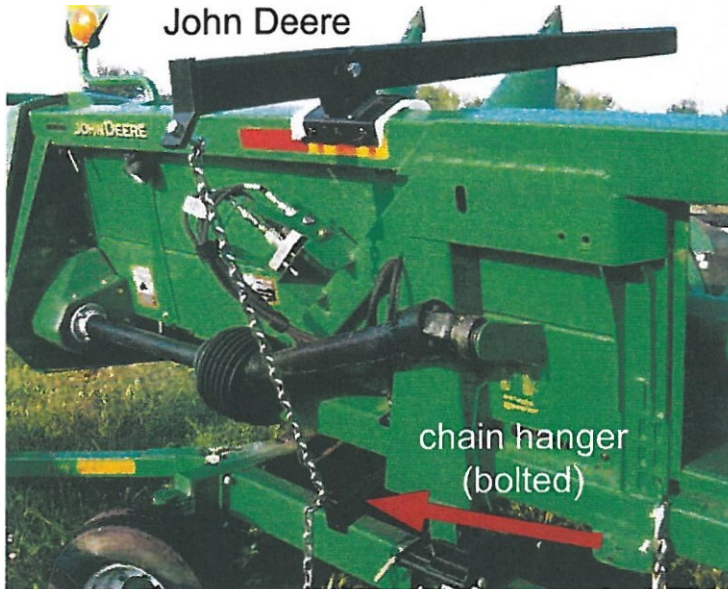
Thank you for purchasing "The Original" corn reel by Kelderman Manufacturing. We are confident that our corn reels are the most innovative, dependable, user-friendly & heavy duty on the market.

Kelderman Manufacturing appreciates your business. We strive to meet the needs of our customers by providing the highest quality products. If you have any questions concerning this owners manual, please call or E-mail us.

Returns will be accepted within 30 days with prior authorization only. Freight will be paid by the customer both ways. We reserve the right to charge a 20% restocking charge on all products. If initial payment was made by cash or check, credit on account will be given.

Step 1: Mounting Bracket Installation

The corn reel attaches to the corn head with the mounting bracket and chain hanger. The mounting bracket fastens to the main top square tube framework at the back of the corn head. On 4R and 6R models, locate the mounting bracket so that the mounting bracket lines up with the center of the first inside snout. On 8R narrow models, line up the mounting brackets with the second inside snout. On 8R wide models, there is another set of mounting brackets included. Mount one pair on the first inside snout and the second set on the third snout from the end. On the 12R30 models, put one set of mounts on the first inside snout and then another set on the fourth snout from the end. On 12R20 models, the mounts need to be located between the third and fourth rows.



John Deere
600 Series

NOTE: Additional mounting bracket pictures can be seen on pages 11, 12 & 13.

If your mounting brackets do not have the chain hanger welded on the main mount, then the chain hanger must be attached below the mounting bracket somewhere along the bottom of the corn head. Since nearly all makes and models of corn heads are different, there is not an exact mounting location. Just try to find a strong piece of structural metal that the chain bracket can be welded to or will allow a hole to be drilled in order to bolt the hanger to. On John Deere 8R corn heads, there is a toolbar that runs across the bottom. The adjustment chain can be wrapped around it and fastened with the quick link provided.

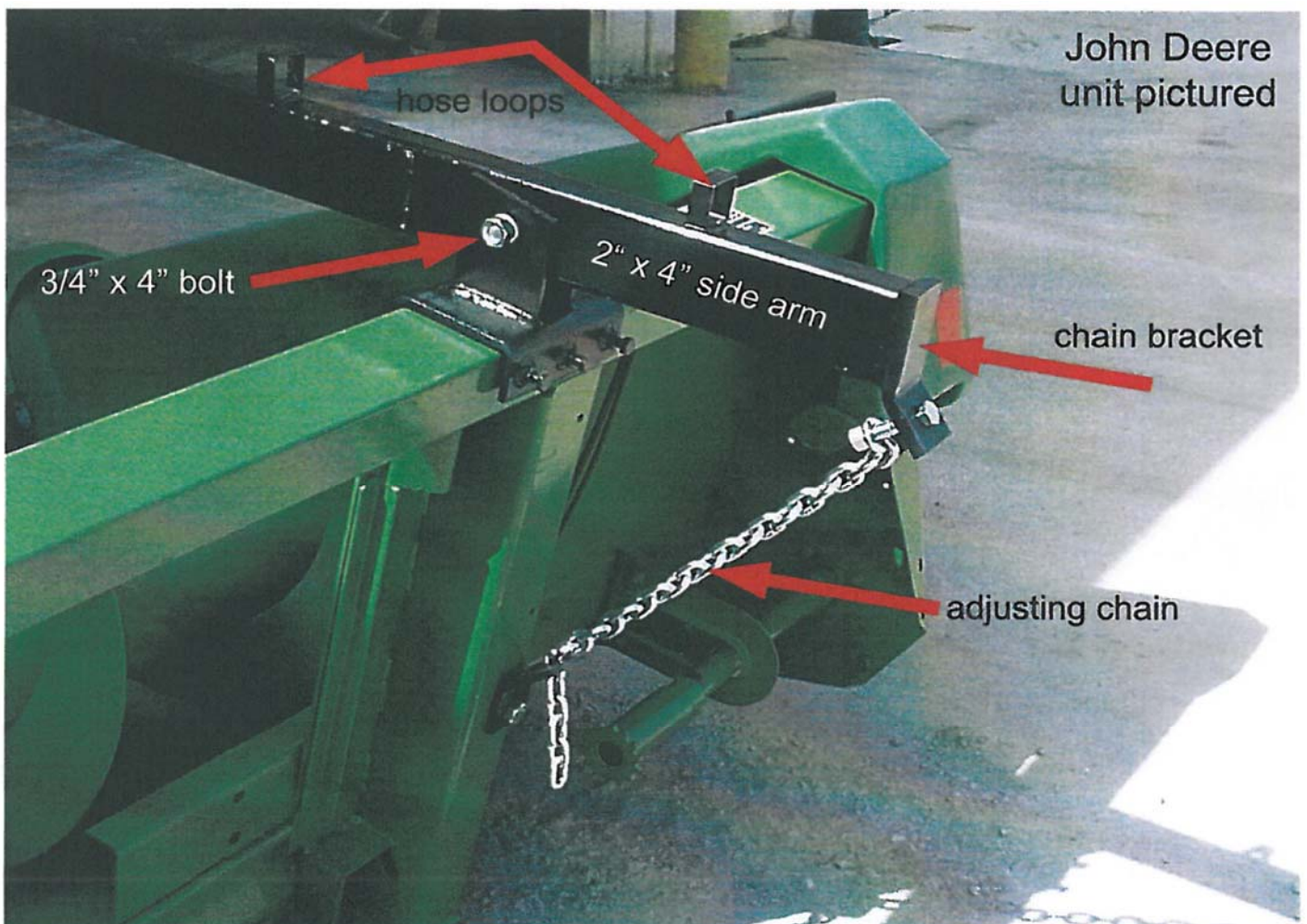
Step 2: Side Arm Installation

The side arms are made of 2" x 4" tubing. One tube has two (2) hose loops welded on it (these are on the top side). The hydraulic motor mounts to this arm. Place it on the side of the corn head which is the same side that the combine's hydraulic hook-ups are. Use the arm without the hose loops on the opposite side.

To install these arms, locate the 3/4" x 4" bolts provided.

Locate the hole drilled through the arm. Place the 2" x 4" arm with the chain bracket facing down, into the mounting bracket and use the bolts to fasten the side arms to the mounting brackets.

Locate the adjusting chain. It is a piece of log chain with a large loop on one end. The larger end mounts to the tab on the 2" x 4" arm. The other end of the chain mounts in the chain hanger mount. Final height adjustment is made after the spokes are mounted.



Step 3: Drive Sprocket & Idler Bearing Installation

The large drive sprocket mounts on the 2" x 4" arm with the hose loops. A good starting point is about eight inches from the end. Mount the sprocket on the side closest to the hydraulics.

The opposite side bearing mounts on the other side. Mount the bearing so that the grease zerk faces forwards, making it easier to grease. NOTE: You can slide the drive sprocket and neutral bearing on the axle before mounting these to the 2" x 4" arms.



Step 4: Drive Axle Installation

The axle is a long 2" x 2" bar. Slide the axle through the drive sprocket bearing and the opposite side bearing. Use a tape measure to center up the axle with the corn head.

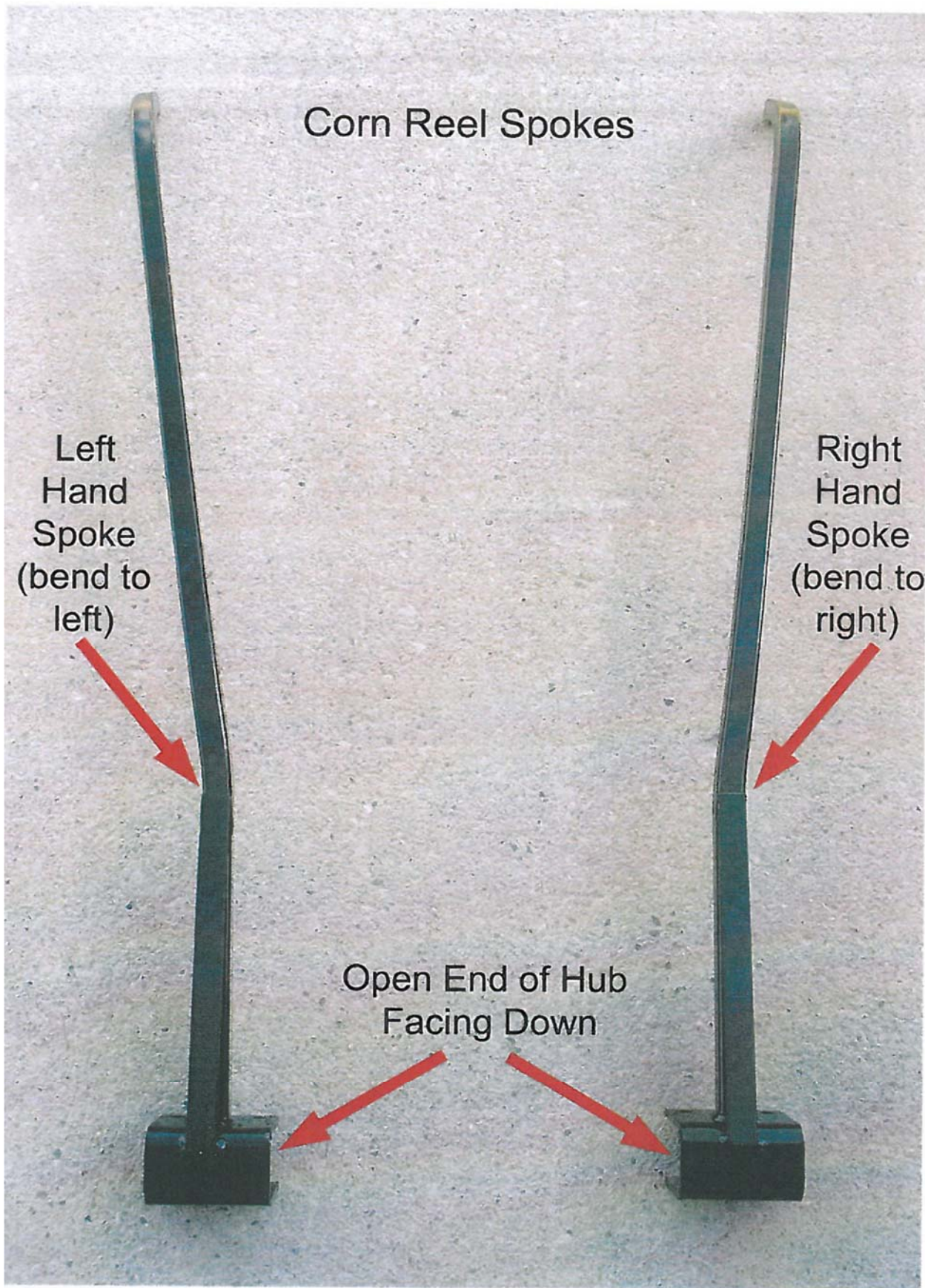


Step 5: Spoke Installation

The spokes are made in pairs. When installing the spokes it is important to understand that there is one left hand spoke and one right hand spoke per row (see page 6). Each spoke is assembled 180 degrees apart. Moving on to the next row, the spokes should be 90 degrees from the previous. For example, after installing the end spoke on one end you should work your way across the head. Start at 12:00 and 6:00, then 3:00 and 9:00 and continue to alternate each row as pictured below. The corn reel turns counter-clockwise when facing the driver's side (left side) of the combine. The spokes drag the corn through the head, they do not pick up the corn. Mount the spokes so that they point towards the cab when up, and pointing away from the cab when facing down.

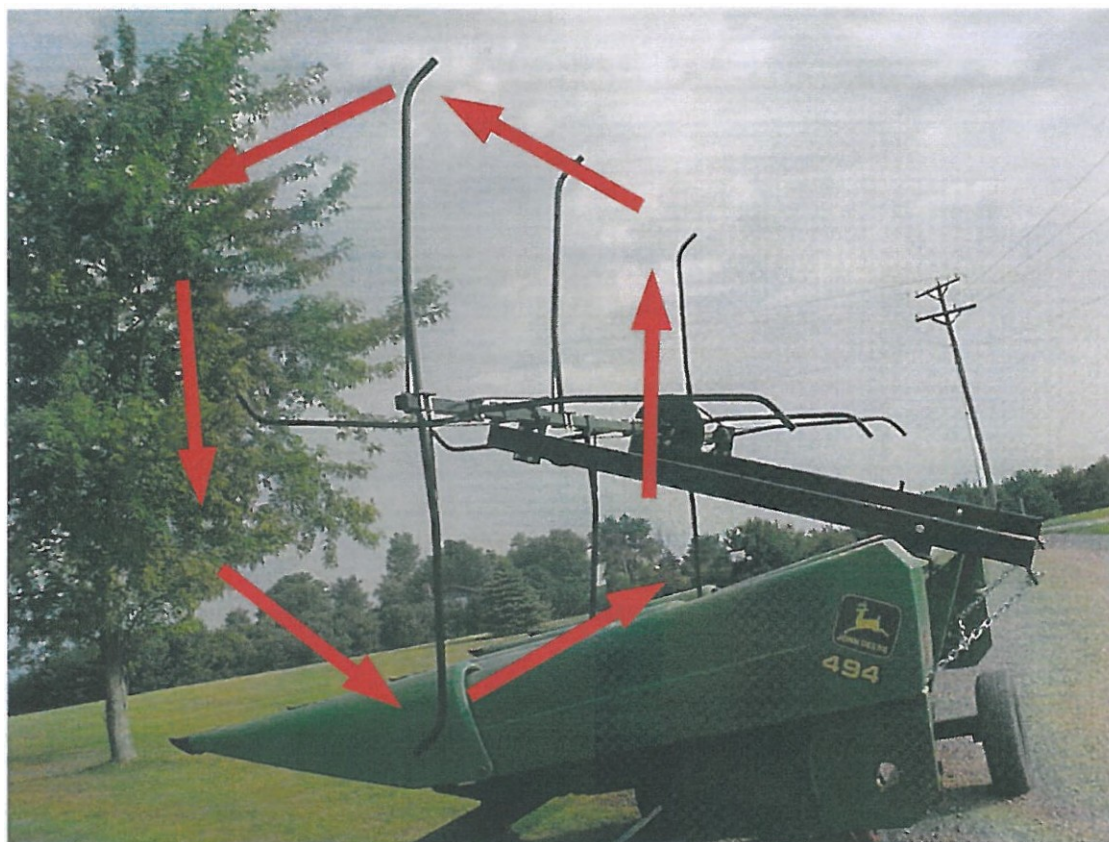


Step 5: Spoke Installation (continued)



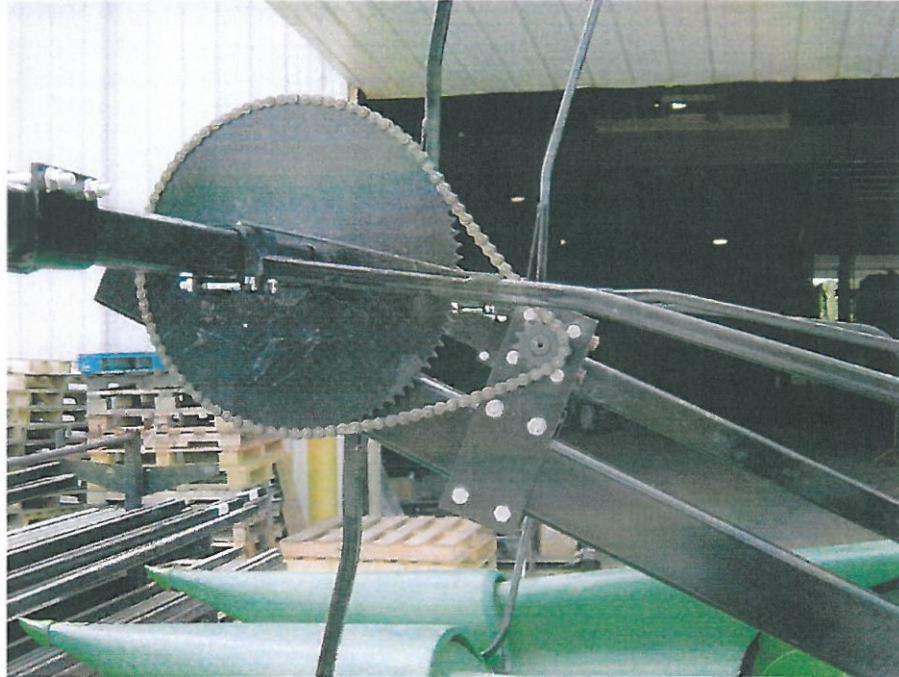
Step 6: End Spoke Installation

There are two end spokes per unit. Attach end spokes so that they are parallel with row two (second from the left).

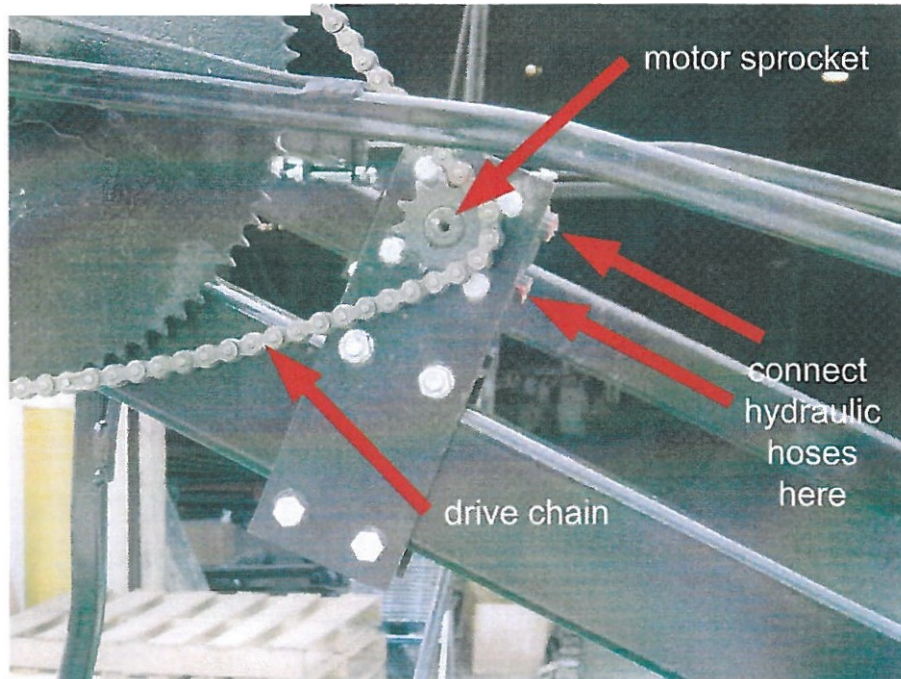


Step 7: Hydraulic Motor Installation (John Deere, Case IH or combines equipped with hydraulics)

The corn reel is driven by a small hydraulic motor that is driven off the hydraulics that drive the combine's bean head. If your combine is not equipped with this, you will need to purchase a variable drive kit.

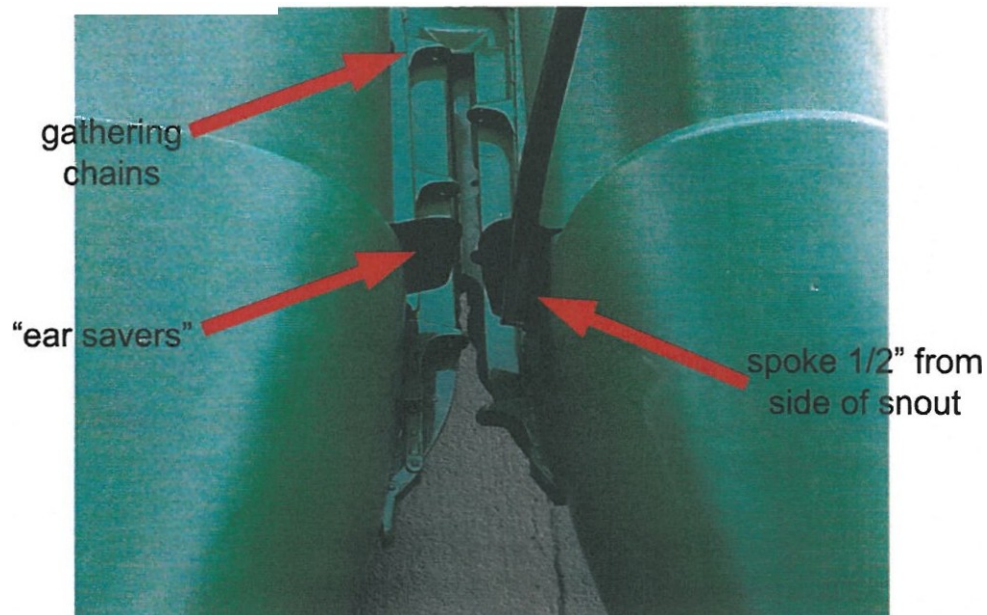


The motor attaches to the left 2" x 4" arm right behind the large sprocket. Before tightening the motor to the 2" x 4" arm, attach the drive chain and position motor so that it is tight. Run the hydraulic hoses through the square hose loops welded to the arm. Attach hose ends (not supplied with the corn reel kit) to hoses and plug into hydraulic outlets of combine.



Step 8: Final Adjustment and Operation

When setting the height of the reel, use the adjusting chains to raise and lower the 2" x 4" arms. Set the height so that the spokes are a good 1 inch above the gathering chains. If the head is equipped with "ear savers", it works best to remove them completely. Also, adjust the spokes so they are approximately 1/2 inch from the sides of the snouts. Finally, when running the corn reel, it is recommended to run at normal ground speed.



If you need to fine tune / even up left-to-right, etc., adjust the 5/8" lock nut on the 2" x 4" end of chain. If in adverse conditions, such as too much build-up on the snouts, remove the rubber "ear savers" and set the spokes to just clear the gathering chains. Normally, if "wrapping" occurs, it is because the reel speed is too fast.

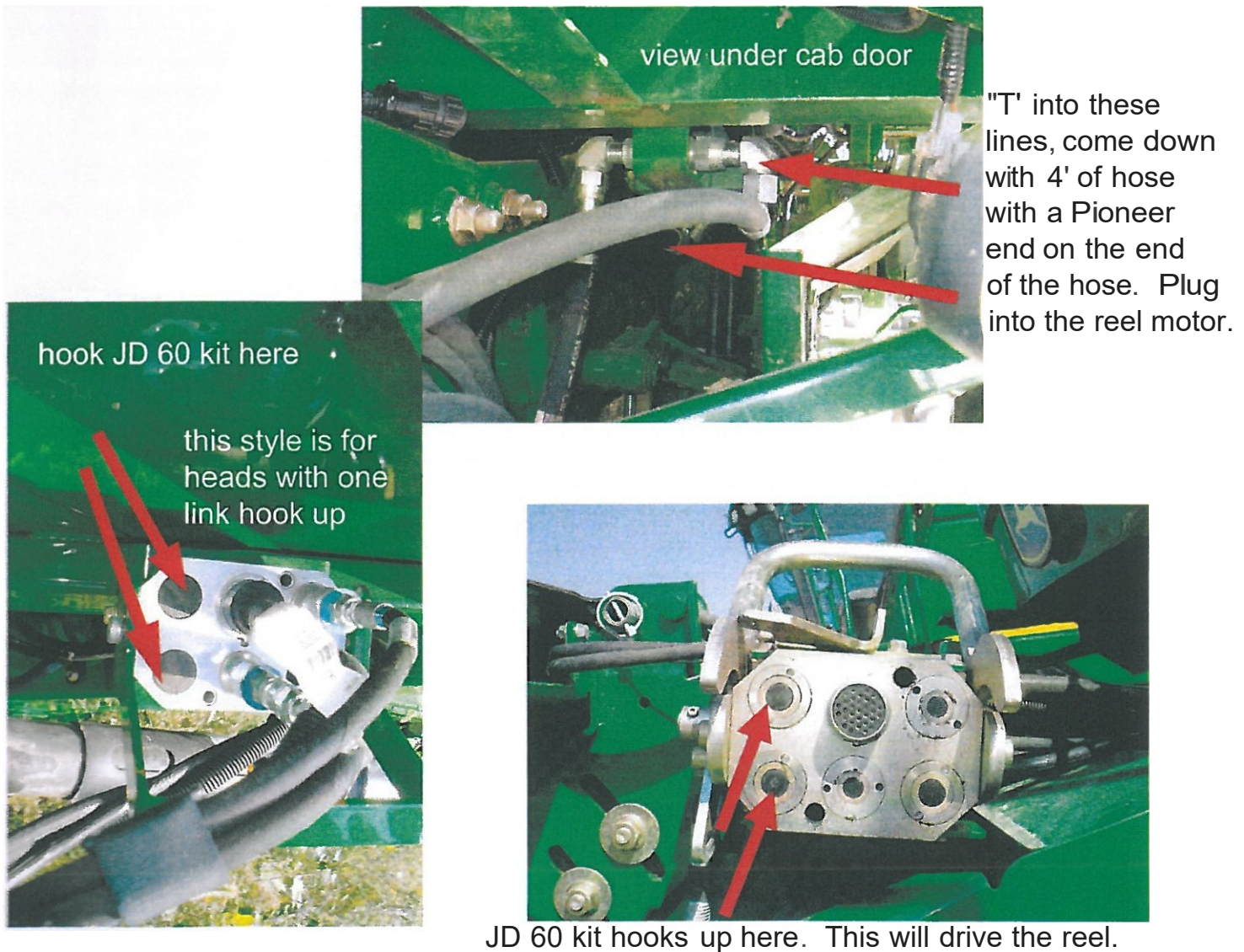


UPDATES For Fall 2009 Season

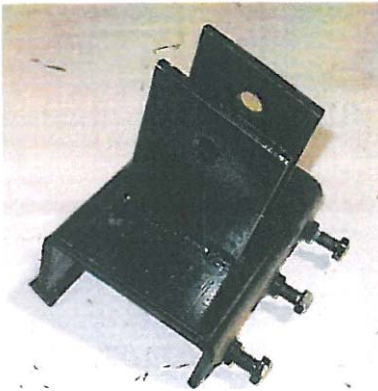
JOHN DEERE - If you have a Manifold Block on the corn head, you will need the JD-60 Kit from us and two of part # AH 225669 (Quick Coupler w/ Snap Rings from J.D. Dealer). If you don't have the Manifold Block on the Corn Head, you will need to "T" into the two lines that would normally run the grain table reel. Will need to put male and female Pioneer fittings on the "T". On the 60 & 70 Series J.D. combines you will run the reel speed on the "Dial-O-Matic".

Case-IH - 7000 & 8000 Series and later model New Holland – Go to the "Command Center", bring up the "Tool Box", go to "Corn Head" (usually Head #2), scroll down to "Row Divider" and enter "Yes". Plumb into reel drive hoses on the 1 link.

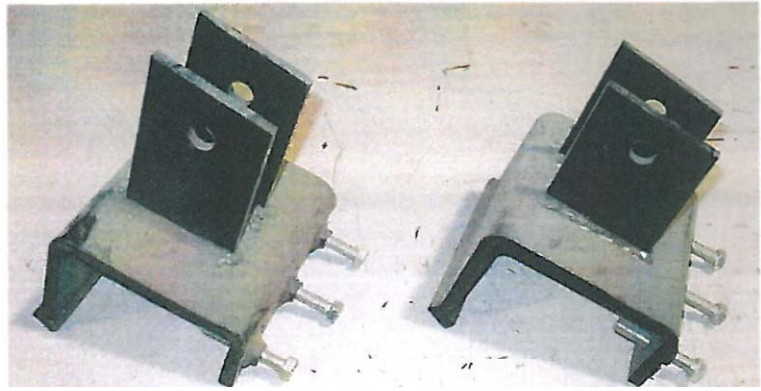
Use this design for heads without one piece hook up



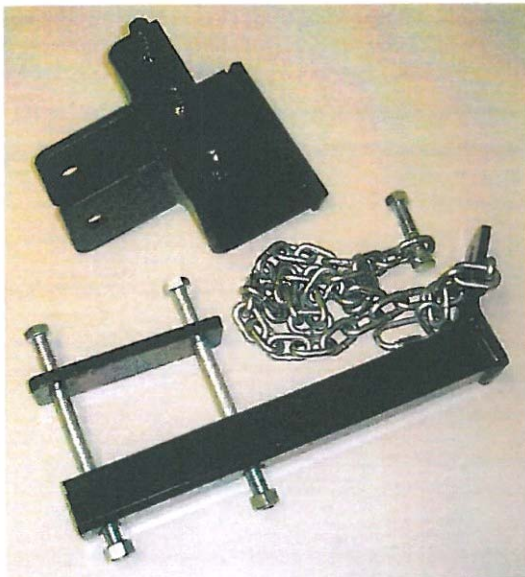
Mounting Brackets



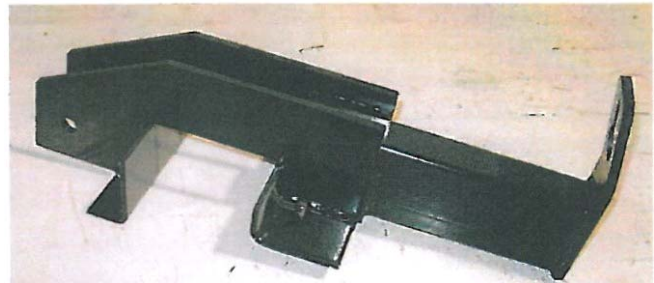
John Deere 444, 494,
643, 644, 693, 843, 893,
963 & 970 New Holland.



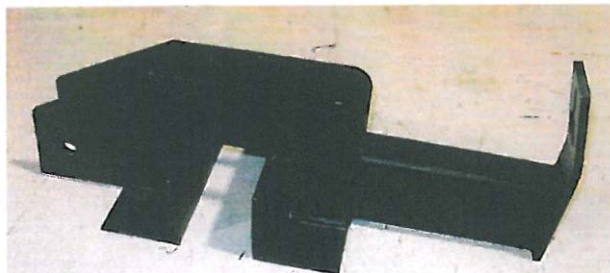
John Deere 12-row tapered frame 2001 & older.
Requires 4 mounts (2 short & 2 long).



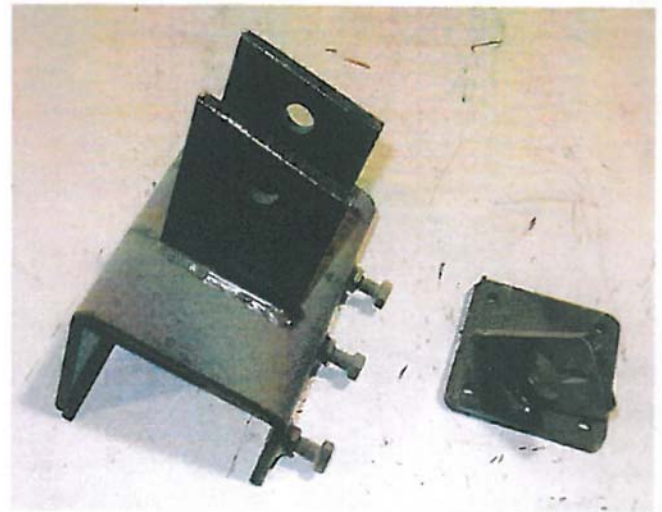
John Deere 606, 608 & 612



John Deere 12-row square frame
2002 & newer. Requires 4 mounts.



CIH 800, 900, 1000 series.

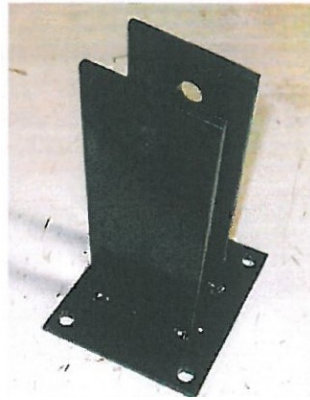


CIH 2206 & 2208 & 3000 Series
Drago w/ chain hanger.

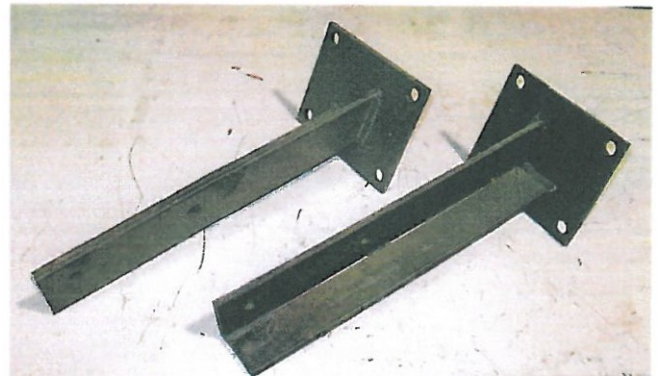
Mounting Brackets



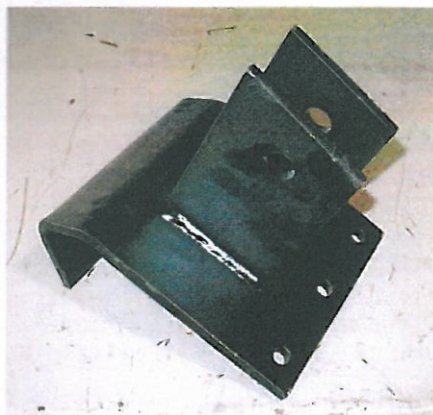
Gleaner Hugger
998 & newer,
1198 MF
2002 & newer.



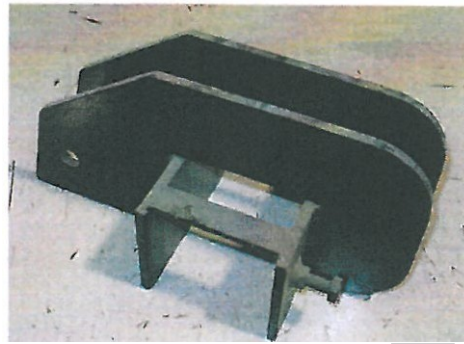
Gleaner Hugger
1997 & older,
863 & 883 MF
& Harvest Tech.



Gleaner Orange & Black
(requires 4" x 4" bar).



MF (angled front beam)



New Idea

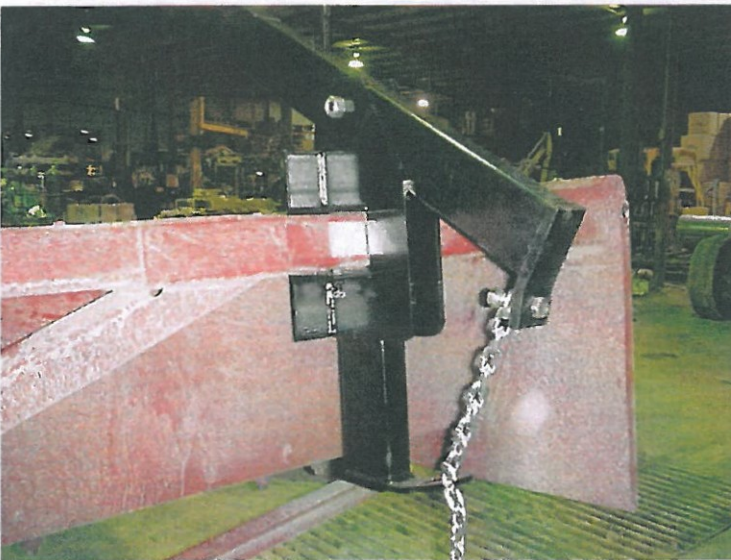
Mounting Brackets



John Deere 444, 494, 643, 644, 693, 843, 893, 963 & 970 New Holland.



John Deere 606, 608 & 612.



CIH 800, 900 & 1000 series.



Gleaner Orange & Black (pictured with 4" x 4" bar).

Mounting Brackets

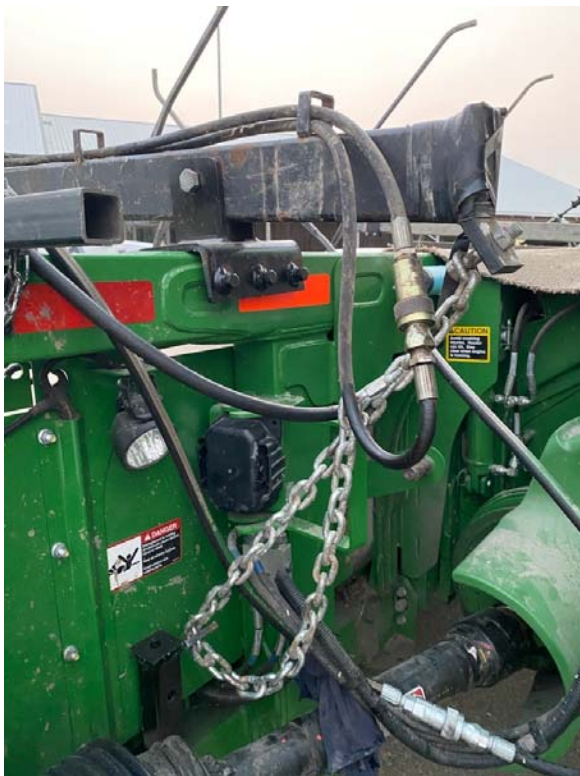
ITEM NO.	PART NUMBER	DESCRIPTION	QTY.
<i>Weldments</i>			
1	15748	Weldment - Corn Reel Mount (DS)	1
2	30612	Mounting Bracket	2
3	30645	Weldment - Chain Hanger Bracket Lower Mount	2
4	30646	Weldment - Corn Reel Mount (PS)	1
<i>Parts</i>			
5	16194	(See PDM) Chain Tie w/ Bend	2
<i>Hardware</i>			
6	12090	HEX BOLT - 1/2"-13 X 1-1/2" - GR5 - Plain	6
7	12044	HEX BOLT - 1/2"-13 X 6" - GR5 - Z	4
8	12510	HEX BOLT - 3/4"-10 X 2" - GR5 - Z	2
9	12536	HEX BOLT - 3/4"-10 X 5.00" - GR5 - Z	2
10	13004	1/2" Flat Washer	8
11	13050	1/2" Lock Washer	4
12	13056	3/4" Lock Washer	4
13	13104	Lock Nut - 1/2"-13 - Gr.5	4
14	13108	Top Lock Nut: 3/4"-10 - GR5 - Z	4

REV	ECN	CHANGE DESCRIPTION	CHANGED BY	DATE

2017 KNOX PRODUCTION UNLESS OTHERWISE SPEC. DIMS. IN PARENTS STD. TOLERANCES XXX ±.000 XXXX ±.010 PRAC DIMS. ± 1/32" Dwg. 8-17	A DO NOT SCALE DRAWING 1:50 Approximate Weight = lbs	
MAT'L SPEC'S DESCRIPTION: Assembly - CASE 4412F Corn Reel Mounts PROJECT: CASE 4412F Folding 12-Row Corn Head PART NUMBER: 30642	DESIGN BY: DATE: 9/14/2020	

CIH 4412F

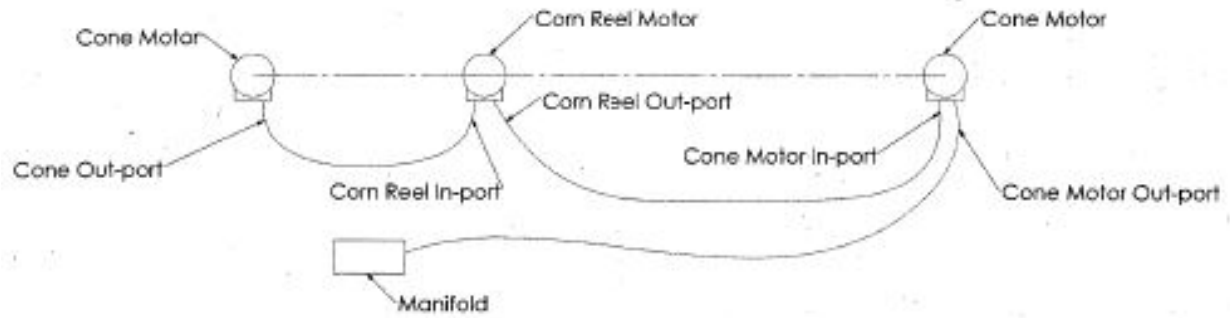
Mounting Brackets



JD 606C

Roll-A-Cone Schematics

Running Cones with a Corn Reel



General Information

Please visit kelderman.com to watch a detailed install video.